

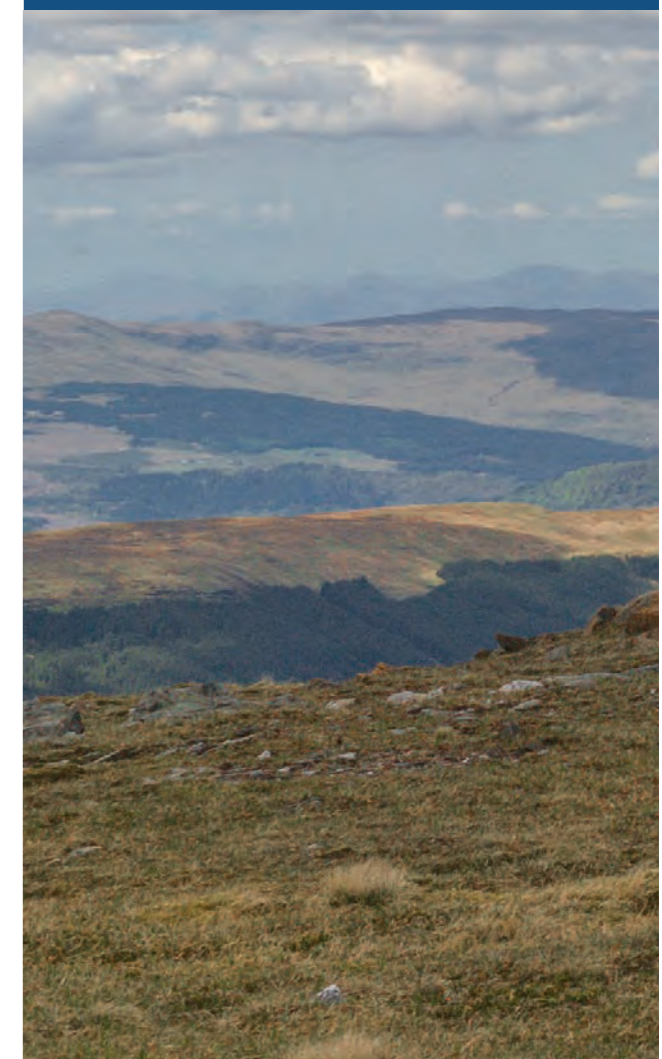
CREAG DHUBH WIND FARM

CREAG DHUBH RENEWABLES LLP
MUIRDEN, TURRIFF
ABERDEENSHIRE
AB53 4NH

www.creagdhubhwindfarm.co.uk

SUPPLEMENTARY
INFORMATION

DECEMBER 2020



PREFACE

The following Supplementary Information (SI) is provided in response to requests from Argyll and Bute Council and NatureScot for additional information to address the potential environmental effects of the proposed development near Succothmore, Strachur, Argyll, PA27 8DW.

The SI has been prepared by Muirden Energy LLP to accompany a planning application (19/02544/PP) submitted by Creag Dhubh Renewables LLP under the Town and Country Planning (Environmental Impact Assessment) (Scotland) Regulations to Argyll and Bute Council (ABC). The planning application is for permission to construct and operate a nine turbine wind farm at Creag Dhubh near Strachur ('the proposed development').

Additional copies of the SI can be purchased directly from Creag Dhubh Renewables LLP: printed copies are available for a cost of £100 or digital versions on CD-ROM are available for £10.

Due to the Coronavirus (COVID-19) pandemic, hard copies of the EIA Report cannot be viewed at public locations. However, the documents can be viewed using Argyll and Bute Council's online planning system and the wind farm's dedicated website: www.creagdhubhwindfarm.co.uk

To order an additional copy, please contact Creag Dhubh Renewables LLP at the following address or phone number:

Creag Dhubh Renewables LLP
Muirden Farm
Turrieff
Aberdeenshire
AB53 4NH

Tel: 01888 569 310

Comments on the application for planning permission should be forwarded to the address below:

Argyll and Bute Council,
Kilmory
Lochgilphead
Argyll
PA31 8RT

Or, by searching for the planning application (19/02544/PP) using Argyll and Bute Council's online planning system, where registered users are able to "make a public comment".

CONTENTS

Figure 7.45 Viewpoint 19: Inveraray Castle Garden Bridge

Figure 7.46 Viewpoint 20: Road Between Inveraray Castle And Garden Bridge

Figure 7.47 Viewpoint 21: A83 (Kilmalieu Cemetery)

Figure 7.48 Viewpoint 22: A83 Aray Bridge

Figure 7.49 Viewpoint 23: A83 (South Of Furnace)

NOTE

Visualisations of wind farms have a number of limitations which you should be aware of when using them to form a judgement of a wind farm proposal. These include:

- » Visualisations can never show exactly what the wind farm will look like in reality due to factors such as: different lighting, weather and seasonal conditions which vary through time and the resolution of the image;
- » The images provided give a reasonable impression of the scale of the turbines and the distance to the turbines, but can never be 100% accurate;
- » A static image cannot convey turbine movement, or flicker or reflection from the sun on the turbine blades as they move;
- » The viewpoints illustrated are representative of views in the area, but cannot represent visibility at all locations;
- » To form the best impression of the impacts of the wind farm proposal these images are best viewed at the viewpoint location shown;
- » The images must be printed at the right size to be viewed properly (260mm by 820mm)
- » You should hold the images flat at a comfortable arm's length. If viewing these images on a wall or board at an exhibition, you should stand at arm's length from the image presented.

PROJECT: CREAG DHUBH

CLIENT: CREAG DHUBH RENEWABLES LLP

FIGURE 7.45

Viewpoint 19 - Inveraray Castle Garden Bridge
Located on the most elevated section of the Garden Bridge in the Inveraray Castle designed landscape.

Scale: 1:50,000

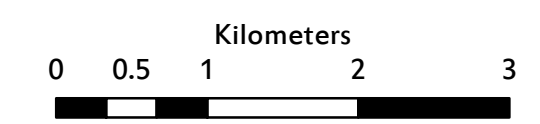
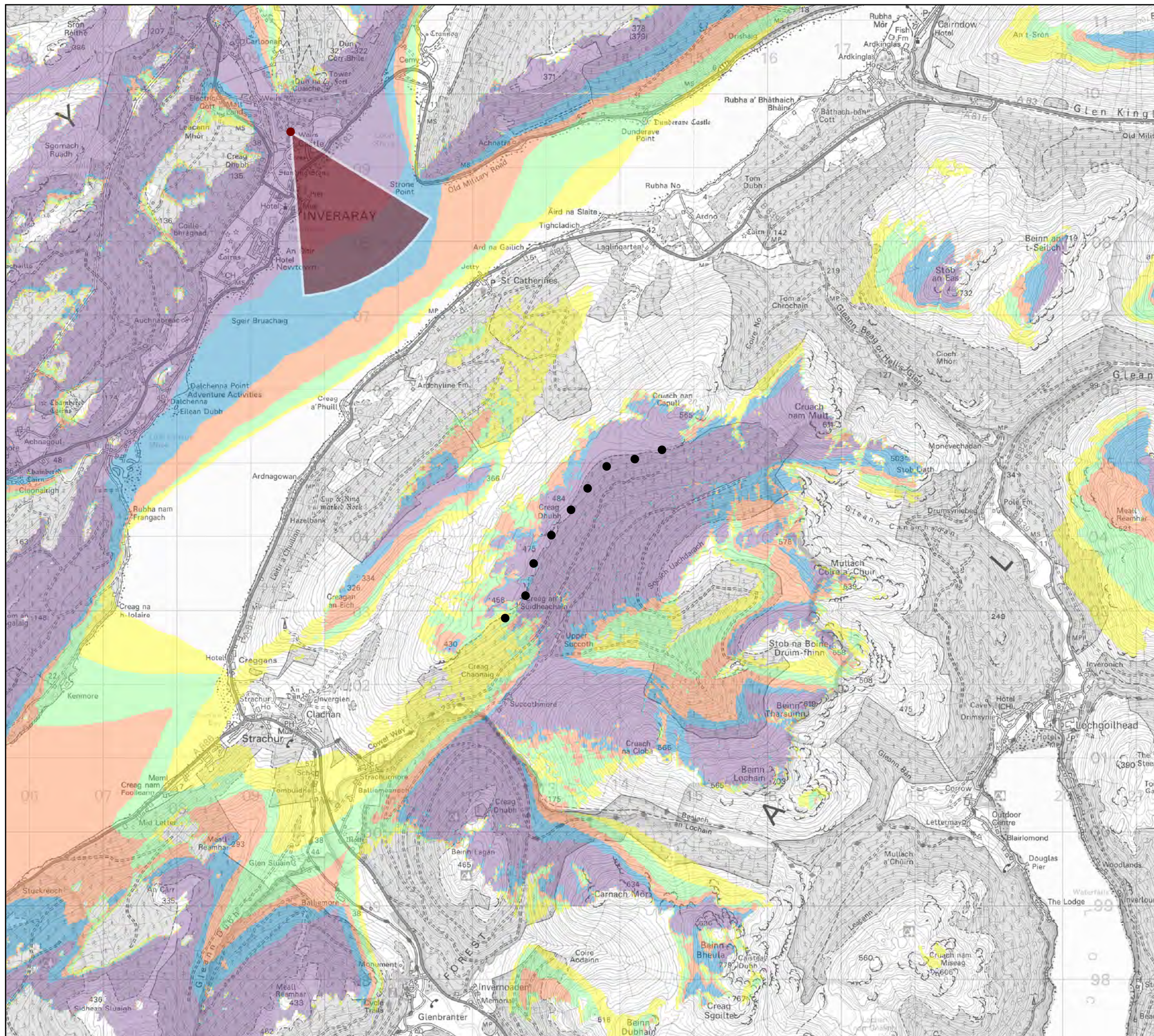
Checked by: AF

Drawn by: AE

Date: 17/09/2020

Key:

- Proposed wind turbine
- Viewpoint
- ▲ 53.5° field of view
- 1 - 2 turbines theoretically visible
- 3 - 4 turbines theoretically visible
- 5 - 6 turbines theoretically visible
- 7 - 8 turbines theoretically visible
- 9 turbines theoretically visible



Crown copyright 2020. All rights reserved. Ordnance Survey licence number 100050155.



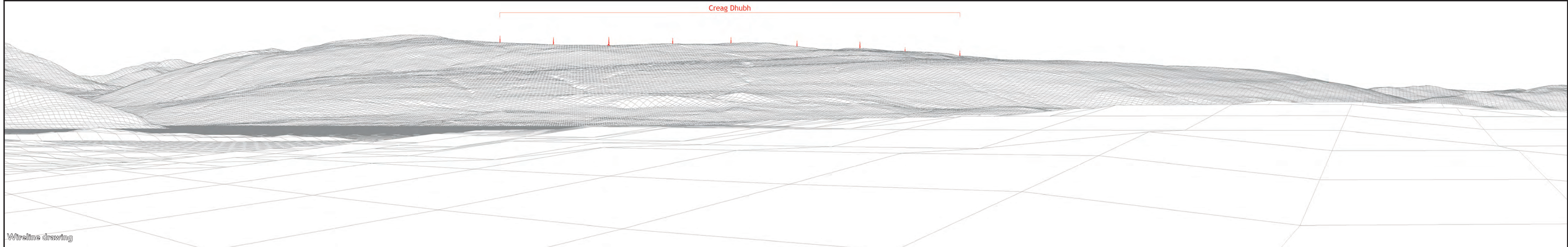
MURDEN ENERGY LLP
Muirden
Turriff
Aberdeenshire
AB53 4NH





Baseline photograph

This image provides landscape and visual context only



Wireline drawing

Creag Dhubh

PROJECT: CREAG DHUBH WIND FARM
FIGURE: 7.45A
VIEWPOINT 19: INVERARAY CASTLE GARDEN BRIDGE

DATE: 14/09/2020
TIME: 12.45
GRID REFERENCE: 209537 709485
ELEVATION: 5m AOD

BEARING TO SITE CENTRE: 145°
DISTANCE TO NEAREST TURBINE: 6239m
CAMERA HEIGHT ABOVE GROUND: 1.5m

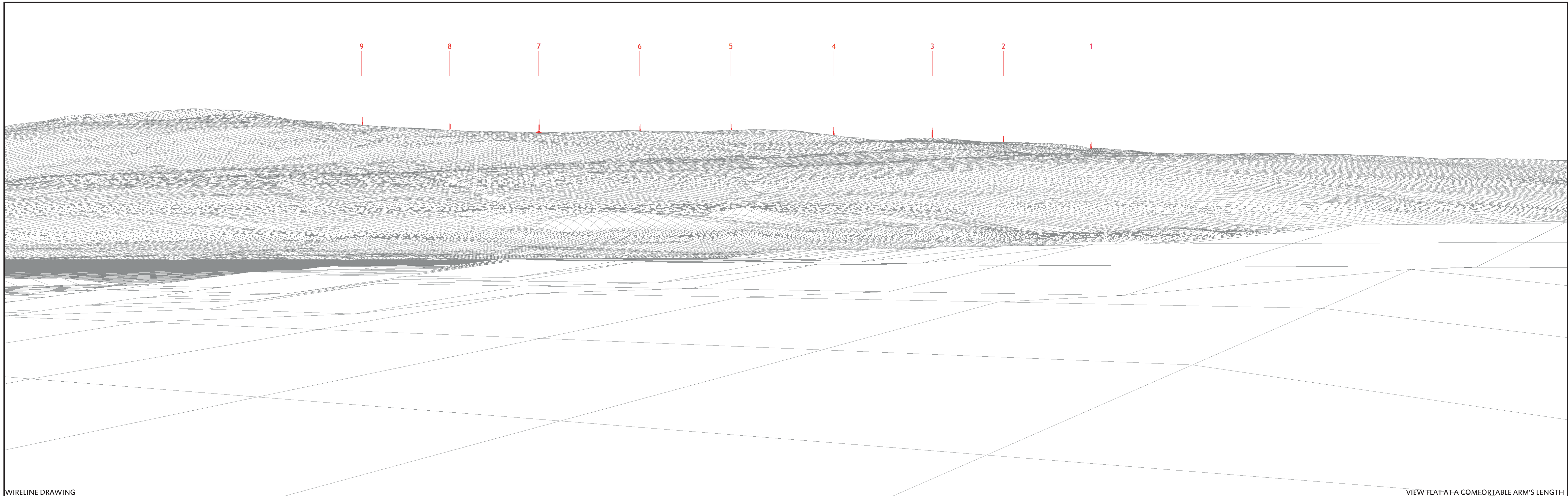
CAMERA: Canon EOS 5D
LENS: 50mm (Canon EF 50mm f/1.8)
HORIZONTAL FIELD OF VIEW: 90°

VERTICAL FIELD OF VIEW: 14.2°
PROJECTION: Cylindrical
PRINCIPAL DISTANCE: 522mm

CUMULATIVE PROJECTS KEY:
 Operational Consented
 Application Scoping

Muirden Energy LLP
 Muirden
 Turriff
 Aberdeenshire
 AB53 4NH





WIRELINE DRAWING

VIEW FLAT AT A COMFORTABLE ARM'S LENGTH

PROJECT: CREAG DHUBH WIND FARM
FIGURE: 7.45B
VIEWPOINT 19: INVERARAY CASTLE GARDEN BRIDGE

DATE: 14/09/2020
TIME: 12.45
GRID REFERENCE: 209537 709485
ELEVATION: 5m AOD

BEARING TO SITE CENTRE: 145°
DISTANCE TO NEAREST TURBINE: 6239m
CAMERA HEIGHT ABOVE GROUND: 1.5m

CAMERA: Canon EOS 5D
LENS: 50mm (Canon EF 50mm f/1.8)
HORIZONTAL FIELD OF VIEW: 53.5°

VERTICAL FIELD OF VIEW: 18.2°
PROJECTION: Planar
PRINCIPAL DISTANCE: 812.5mm

Muirden Energy LLP
Muirden
Turrieff
Aberdeenshire
AB53 4NH





PHOTOMONTAGE

VIEW FLAT AT A COMFORTABLE ARM'S LENGTH

PROJECT: CREAG DHUBH WIND FARM
FIGURE: 7.45C
VIEWPOINT 19: INVERARAY CASTLE GARDEN BRIDGE

DATE: 14/09/2020
TIME: 12.45
GRID REFERENCE: 209537 709485
ELEVATION: 5m AOD

BEARING TO SITE CENTRE: 145°
DISTANCE TO NEAREST TURBINE: 6239m
CAMERA HEIGHT ABOVE GROUND: 1.5m

CAMERA: Canon EOS 5D
LENS: 50mm (Canon EF 50mm f/1.8)
HORIZONTAL FIELD OF VIEW: 53.5°

VERTICAL FIELD OF VIEW: 18.2°
PROJECTION: Planar
PRINCIPAL DISTANCE: 812.5mm

Muirden Energy LLP
Muirden
Turriff
Aberdeenshire
AB53 4NH



PROJECT: CREAG DHUBH

CLIENT: CREAG DHUBH RENEWABLES LLP

FIGURE 7.46

Viewpoint 20 - Road between Inveraray Castle and Garden Bridge

Located on the hedgerow lined road between Inveraray Castle and the Garden Bridge, approximately 50m southwest of the bridge.

Scale: 1:50,000

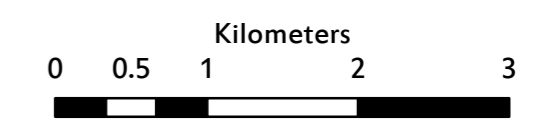
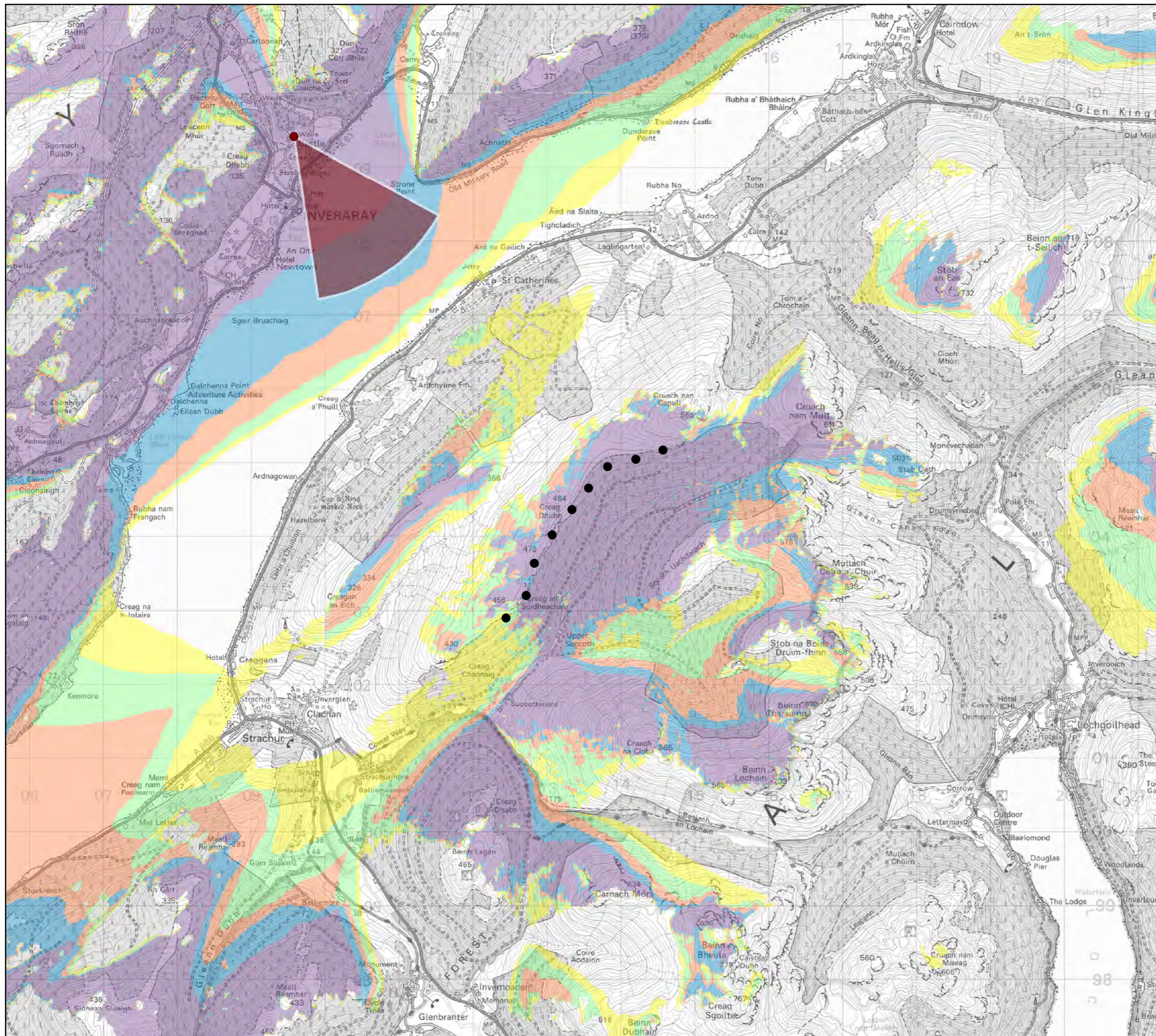
Checked by: AF

Drawn by: AE

Date: 15/12/2020

Key:

- Proposed wind turbine
- Viewpoint
- ▲ 53.5° field of view
- 1 - 2 turbines theoretically visible
- 3 - 4 turbines theoretically visible
- 5 - 6 turbines theoretically visible
- 7 - 8 turbines theoretically visible
- 9 turbines theoretically visible

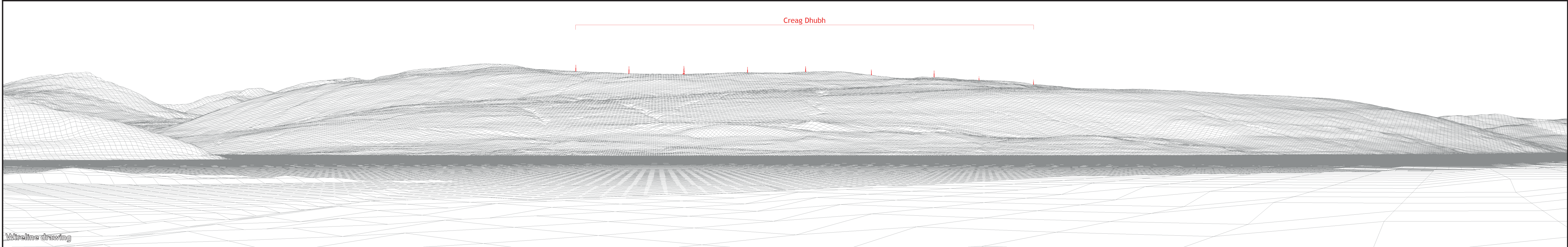


Crown copyright 2020. All rights reserved. Ordnance Survey licence number 100050155.



MURDEN ENERGY LLP
Muirden
Turriff
Aberdeenshire
AB53 4NH





PROJECT: CREAG DHUBH WIND FARM
FIGURE: 7.46A
VIEWPOINT 20: ROAD BETWEEN INVERARAY CASTLE AND GARDEN BRIDGE

DATE: 14/10/2020
TIME: 16.40
GRID REFERENCE: 209576 709418
ELEVATION: 10m AOD

BEARING TO SITE CENTRE: 142°
DISTANCE TO NEAREST TURBINE: 6164m
CAMERA HEIGHT ABOVE GROUND: 1.5m

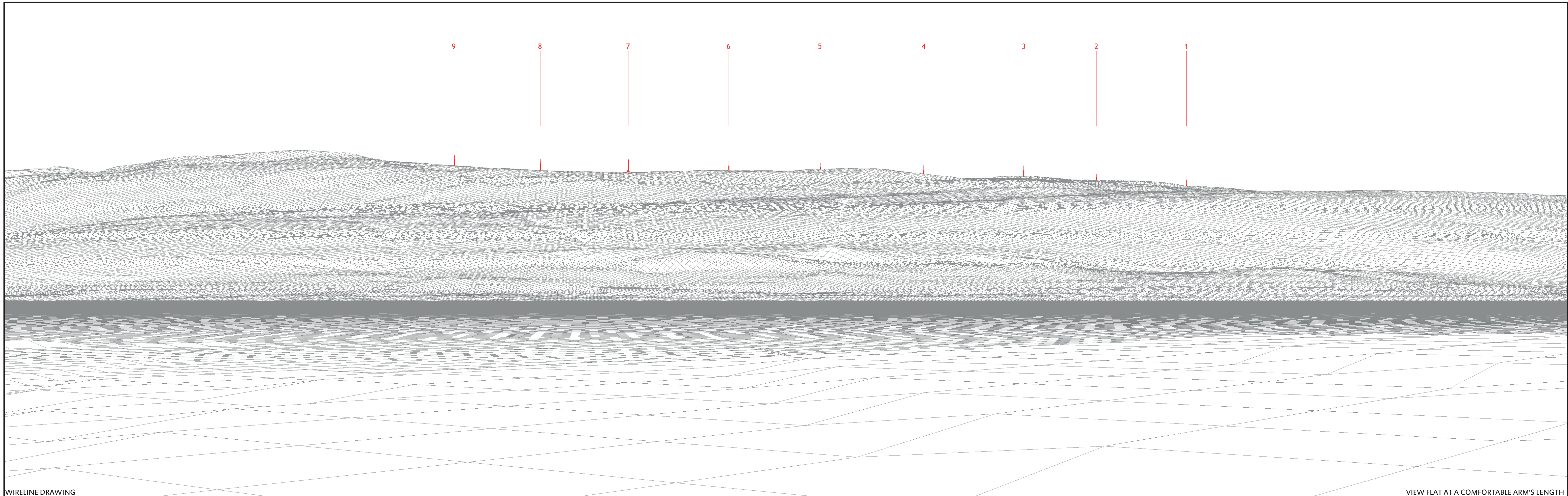
CAMERA: Canon EOS 5D
LENS: 50mm (Canon EF 50mm f/1.8)
HORIZONTAL FIELD OF VIEW: 90°

VERTICAL FIELD OF VIEW: 14.2°
PROJECTION: Cylindrical
PRINCIPAL DISTANCE: 522mm

CUMULATIVE PROJECTS KEY:
 Operational Consented
 Application Scoping

Muirden Energy LLP
 Muirden
 Turriff
 Aberdeenshire
 AB53 4NH





WIRELINE DRAWING

VIEW FLAT AT A COMFORTABLE ARM'S LENGTH

PROJECT: CREAG DHUBH WIND FARM
FIGURE: 7.46B
VIEWPOINT 20: ROAD BETWEEN INVERARAY CASTLE AND GARDEN BRIDGE

DATE: 14/10/2020
TIME: 16.40
GRID REFERENCE: 209576 709418
ELEVATION: 10m AOD

BEARING TO SITE CENTRE: 142°
DISTANCE TO NEAREST TURBINE: 6164m
CAMERA HEIGHT ABOVE GROUND: 1.5m

CAMERA: Canon EOS 5D
LENS: 50mm (Canon EF 50mm f/1.8)
HORIZONTAL FIELD OF VIEW: 53.5°

VERTICAL FIELD OF VIEW: 18.2°
PROJECTION: Planar
PRINCIPAL DISTANCE: 812.5mm

Muirden Energy LLP
 Muirden
 Turriff
 Aberdeenshire
 AB53 4NH





PHOTOMONTAGE

VIEW FLAT AT A COMFORTABLE ARM'S LENGTH

PROJECT: CREG DHUBH WIND FARM
FIGURE: 7.46C
VIEWPOINT 20: ROAD BETWEEN INVERARAY CASTLE AND GARDEN BRIDGE

DATE: 14/10/2020
TIME: 16.40
GRID REFERENCE: 209576 709418
ELEVATION: 10m AOD

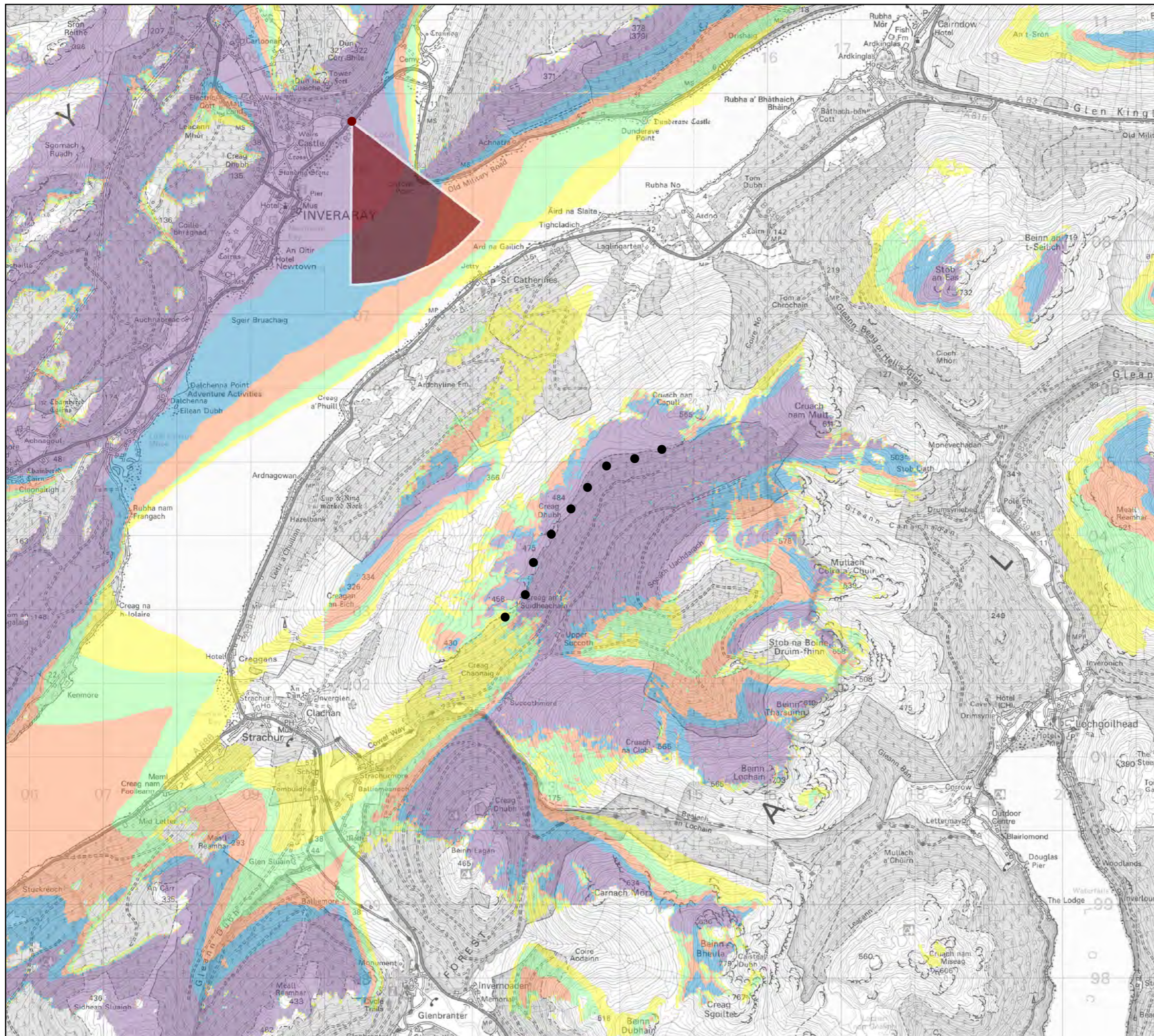
BEARING TO SITE CENTRE: 142°
DISTANCE TO NEAREST TURBINE: 6164m
CAMERA HEIGHT ABOVE GROUND: 1.5m

CAMERA: Canon EOS 5D
LENS: 50mm (Canon EF 50mm f/1.8)
HORIZONTAL FIELD OF VIEW: 53.5°

VERTICAL FIELD OF VIEW: 18.2°
PROJECTION: Planar
PRINCIPAL DISTANCE: 812.5mm

Muirden Energy LLP
Muirden
Turriff
Aberdeenshire
AB53 4NH





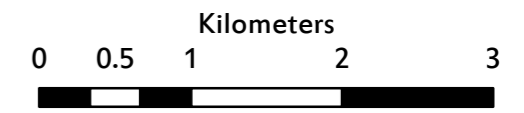
PROJECT: CREAG DHUBH
 CLIENT: CREAG DHUBH RENEWABLES LLP

FIGURE 7.47
 Viewpoint 21 - A83 (Kilmalieu Cemetry)

Located on the A83 where road users travelling south receive unhindered views towards Inveraray.

Scale: 1:50,000 Checked by: AF
 Drawn by: AE Date: 16/12/2020

- Key:**
- Proposed wind turbine
 - Viewpoint
 - ▲ 53.5° field of view
 - 1 - 2 turbines theoretically visible
 - 3 - 4 turbines theoretically visible
 - 5 - 6 turbines theoretically visible
 - 7 - 8 turbines theoretically visible
 - 9 turbines theoretically visible



Crown copyright 2020. All rights reserved. Ordnance Survey licence number 100050155.



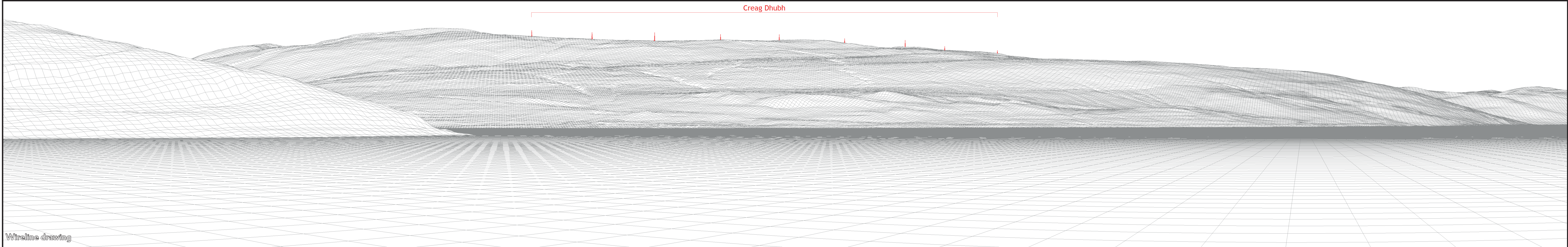
MURDEN ENERGY LLP
 Muirden
 Turriff
 Aberdeenshire
 AB53 4NH





Baseline photograph

This image provides landscape and visual context only



Wireline drawing

PROJECT: CREAG DHUBH WIND FARM
FIGURE: 7.47A
VIEWPOINT 21: A83 (KILMALIEU CEMETERY)

DATE: 14/10/2020
TIME: 15.50
GRID REFERENCE: 210368 709625
ELEVATION: 9m AOD

BEARING TO SITE CENTRE: 151°
DISTANCE TO NEAREST TURBINE: 5813m
CAMERA HEIGHT ABOVE GROUND: 1.5m

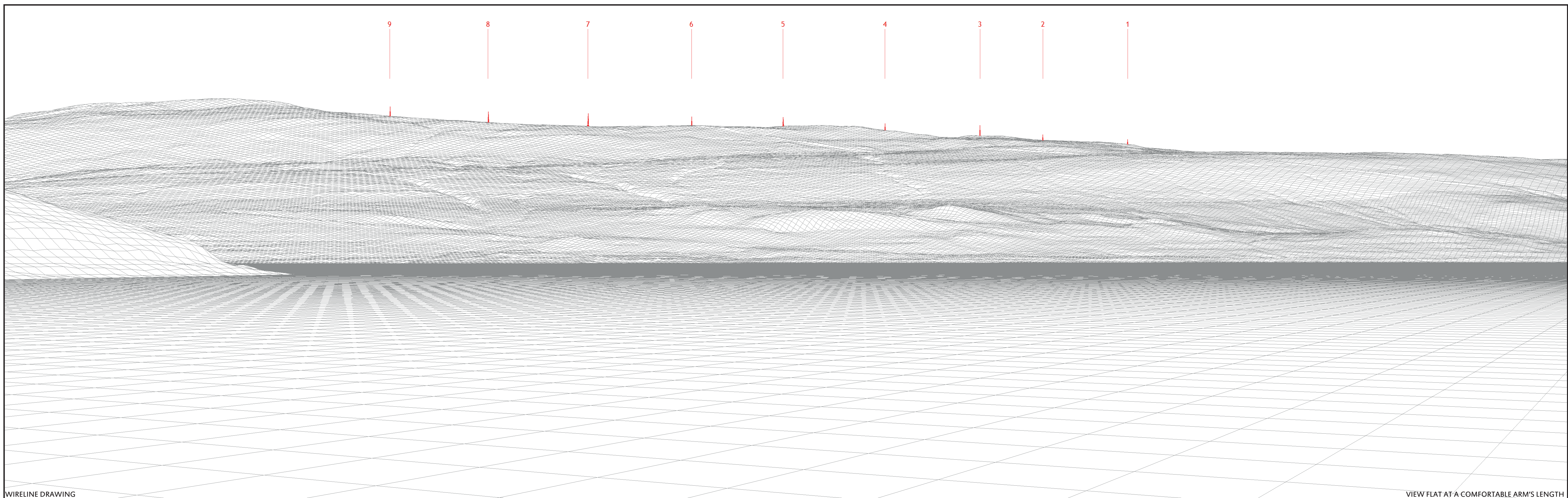
CAMERA: Canon EOS 5D
LENS: 50mm (Canon EF 50mm f/1.8)
HORIZONTAL FIELD OF VIEW: 90°

VERTICAL FIELD OF VIEW: 14.2°
PROJECTION: Cylindrical
PRINCIPAL DISTANCE: 522mm

CUMULATIVE PROJECTS KEY:
 Operational Consented
 Application Scoping

Muirden Energy LLP
 Muirden
 Turriff
 Aberdeenshire
 AB53 4NH





WIRELINE DRAWING

VIEW FLAT AT A COMFORTABLE ARM'S LENGTH

PROJECT: CREAG DHUBH WIND FARM
FIGURE: 7.47B
VIEWPOINT 21: A83 (KILMALIEU CEMETERY)

DATE: 14/10/2020
TIME: 15.50
GRID REFERENCE: 210368 709625
ELEVATION: 9m AOD

BEARING TO SITE CENTRE: 151°
DISTANCE TO NEAREST TURBINE: 5813m
CAMERA HEIGHT ABOVE GROUND: 1.5m

CAMERA: Canon EOS 5D
LENS: 50mm (Canon EF 50mm f/1.8)
HORIZONTAL FIELD OF VIEW: 53.5°

VERTICAL FIELD OF VIEW: 18.2°
PROJECTION: Planar
PRINCIPAL DISTANCE: 812.5mm

Muirden Energy LLP
Muirden
Turrieff
Aberdeenshire
AB53 4NH





PHOTOMONTAGE

VIEW FLAT AT A COMFORTABLE ARM'S LENGTH

PROJECT: CREAG DHUBH WIND FARM
FIGURE: 7.47C
VIEWPOINT 21: A83 (KILMALIEU CEMETERY)

DATE: 14/10/2020
TIME: 15.50
GRID REFERENCE: 210368 709625
ELEVATION: 9m AOD

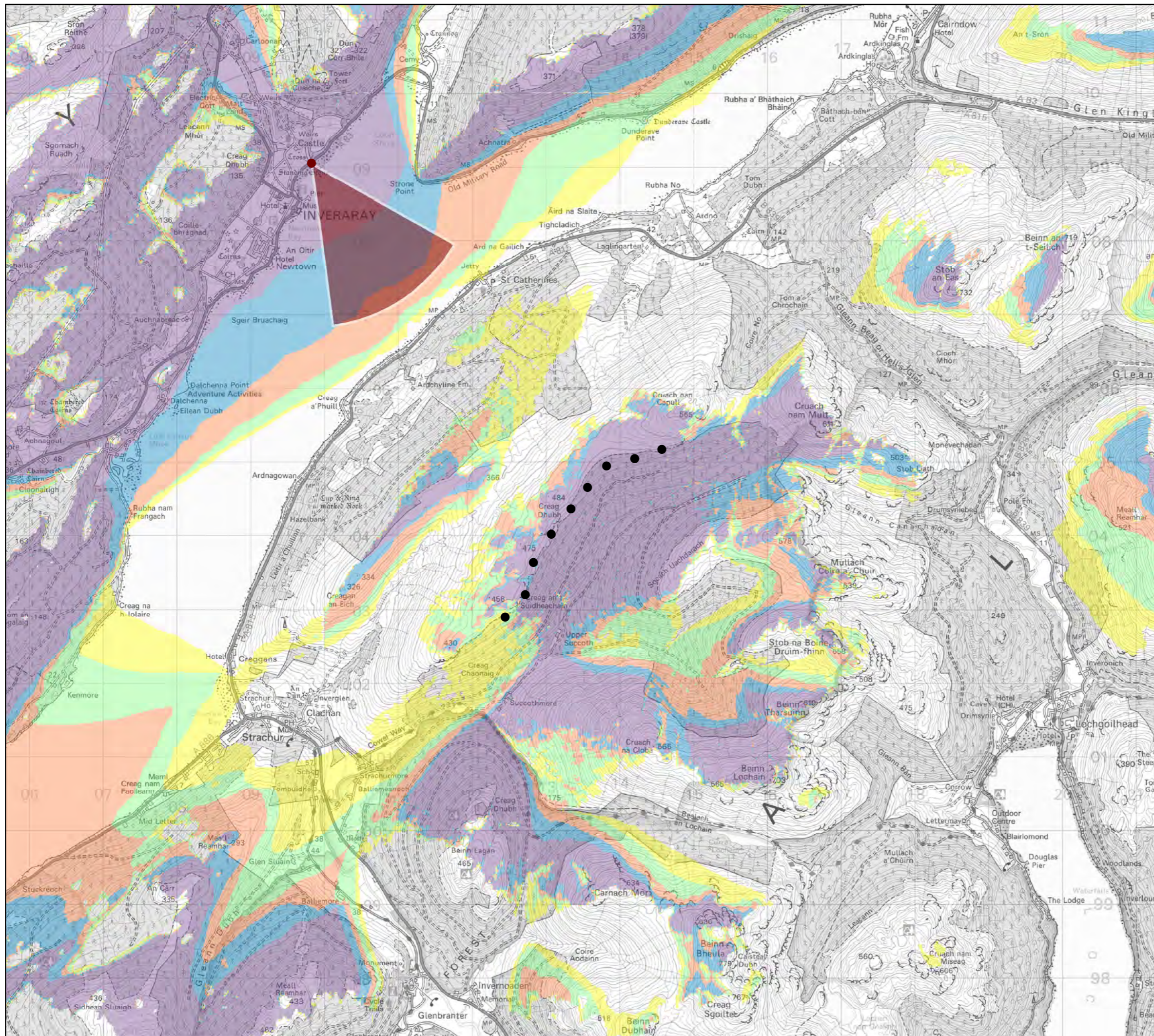
BEARING TO SITE CENTRE: 151°
DISTANCE TO NEAREST TURBINE: 5813m
CAMERA HEIGHT ABOVE GROUND: 1.5m

CAMERA: Canon EOS 5D
LENS: 50mm (Canon EF 50mm f/1.8)
HORIZONTAL FIELD OF VIEW: 53.5°

VERTICAL FIELD OF VIEW: 18.2°
PROJECTION: Planar
PRINCIPAL DISTANCE: 812.5mm

Muirden Energy LLP
Muirden
Turriff
Aberdeenshire
AB53 4NH





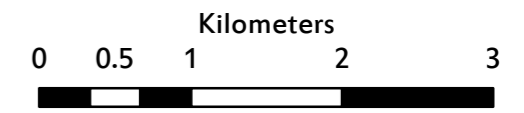
PROJECT: CREAG DHUBH
 CLIENT: CREAG DHUBH RENEWABLES LLP

FIGURE 7.48
 Viewpoint 22 - A83 Aray Bridge

Located on the highest point of the bridge.

Scale: 1:50,000 Checked by: AF
 Drawn by: AE Date: 15/12/2020

- Key:**
- Proposed wind turbine
 - Viewpoint
 - ▲ 53.5° field of view
 - 1 - 2 turbines theoretically visible
 - 3 - 4 turbines theoretically visible
 - 5 - 6 turbines theoretically visible
 - 7 - 8 turbines theoretically visible
 - 9 turbines theoretically visible



Crown copyright 2020. All rights reserved. Ordnance Survey licence number 100050155.



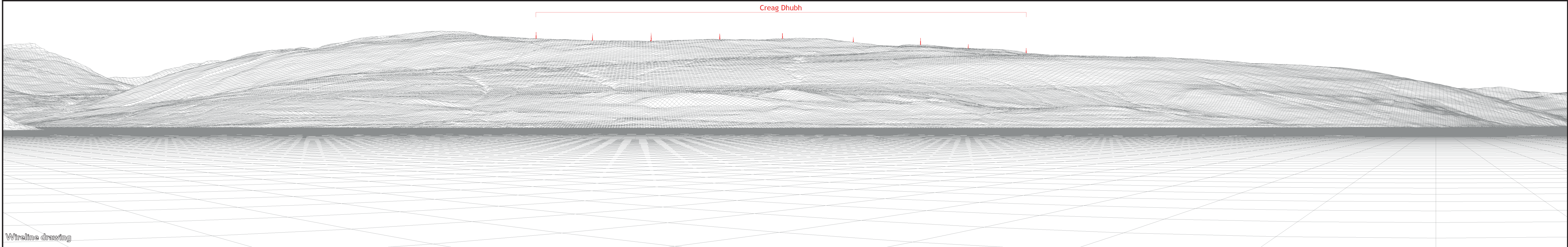
MURDEN ENERGY LLP
 Muirden
 Turriff
 Aberdeenshire
 AB53 4NH





Baseline photograph

This image provides landscape and visual context only



Wireline drawing

PROJECT: CREAG DHUBH WIND FARM
FIGURE: 7.48A
VIEWPOINT 22: A83 ARAY BRIDGE

DATE: 14/10/2020
TIME: 15.40
GRID REFERENCE: 209820 709053
ELEVATION: 7m AOD

BEARING TO SITE CENTRE: 143°
DISTANCE TO NEAREST TURBINE: 5732m
CAMERA HEIGHT ABOVE GROUND: 1.5m

CAMERA: Canon EOS 5D
LENS: 50mm (Canon EF 50mm f/1.8)
HORIZONTAL FIELD OF VIEW: 90°

VERTICAL FIELD OF VIEW: 14.2°
PROJECTION: Cylindrical
PRINCIPAL DISTANCE: 522mm

CUMULATIVE PROJECTS KEY:
 Operational Consented
 Application Scoping

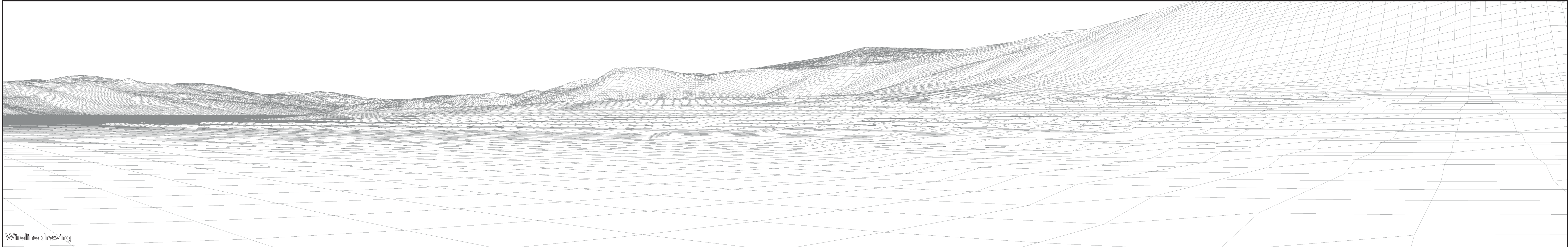
Muirden Energy LLP
 Muirden
 Turriff
 Aberdeenshire
 AB53 4NH





Baseline photograph

This image provides landscape and visual context only



Wireline drawing

PROJECT: CREAG DHUBH WIND FARM
FIGURE: 7.48B
VIEWPOINT 22: A83 ARAY BRIDGE

DATE: 14/10/2020
TIME: 15.40
GRID REFERENCE: 209820 709053
ELEVATION: 7m AOD

DIRECTION OF VIEW: 233°
DISTANCE TO NEAREST TURBINE: 5732m
CAMERA HEIGHT ABOVE GROUND: 1.5m

CAMERA: Canon EOS 5D
LENS: 50mm (Canon EF 50mm f/1.8)
HORIZONTAL FIELD OF VIEW: 90°

VERTICAL FIELD OF VIEW: 14.2°
PROJECTION: Cylindrical
PRINCIPAL DISTANCE: 522mm

CUMULATIVE PROJECTS KEY:
 Operational Consented
 Application Scoping

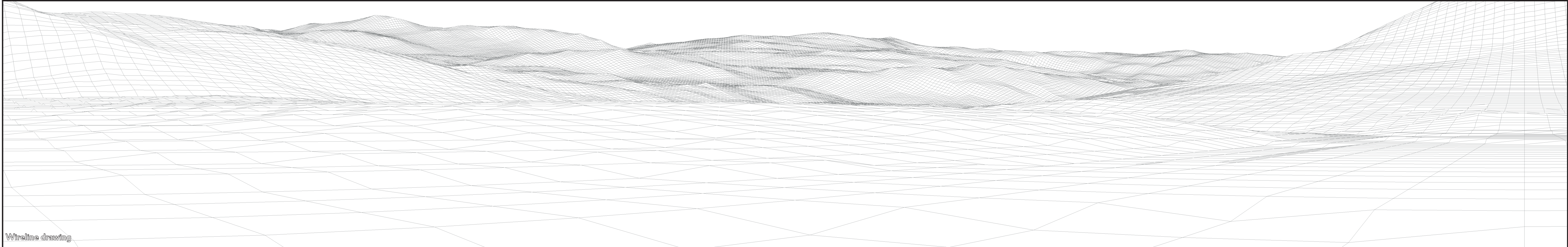
Muirden Energy LLP
 Muirden
 Turriff
 Aberdeenshire
 AB53 4NH





Baseline photograph

This image provides landscape and visual context only



Wireline drawing

PROJECT: CREAG DHUBH WIND FARM
FIGURE: 7.48C
VIEWPOINT 22: A83 ARAY BRIDGE

DATE: 14/10/2020
TIME: 15.40
GRID REFERENCE: 209820 709053
ELEVATION: 7m AOD

DIRECTION OF VIEW: 323°
DISTANCE TO NEAREST TURBINE: 5732m
CAMERA HEIGHT ABOVE GROUND: 1.5m

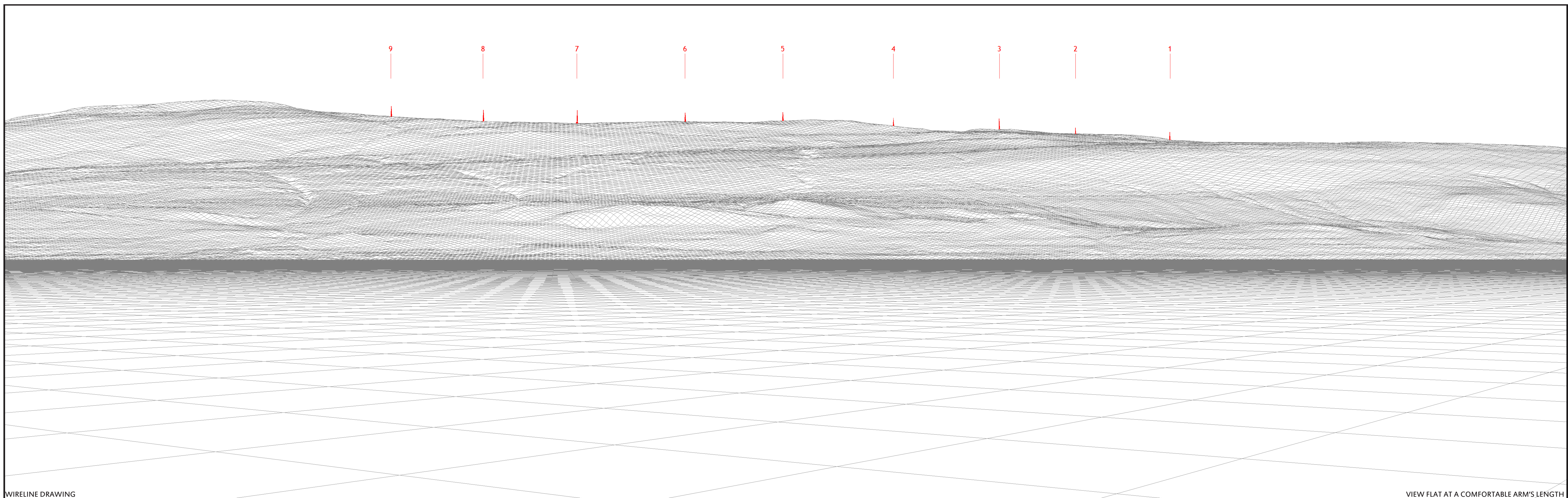
CAMERA: Canon EOS 5D
LENS: 50mm (Canon EF 50mm f/1.8)
HORIZONTAL FIELD OF VIEW: 90°

VERTICAL FIELD OF VIEW: 14.2°
PROJECTION: Cylindrical
PRINCIPAL DISTANCE: 522mm

CUMULATIVE PROJECTS KEY:
Operational Consented
Application Scoping

Muirden Energy LLP
Muirden
Turriff
Aberdeenshire
AB53 4NH





WIRELINE DRAWING

VIEW FLAT AT A COMFORTABLE ARM'S LENGTH

PROJECT: CREAG DHUBH WIND FARM
FIGURE: 7.48D
VIEWPOINT 22: A83 ARAY BRIDGE

DATE: 14/10/2020
TIME: 15.40
GRID REFERENCE: 209820 709053
ELEVATION: 7m AOD

BEARING TO SITE CENTRE: 143°
DISTANCE TO NEAREST TURBINE: 5732m
CAMERA HEIGHT ABOVE GROUND: 1.5m

CAMERA: Canon EOS 5D
LENS: 50mm (Canon EF 50mm f/1.8)
HORIZONTAL FIELD OF VIEW: 53.5°

VERTICAL FIELD OF VIEW: 18.2°
PROJECTION: Planar
PRINCIPAL DISTANCE: 812.5mm

Muirden Energy LLP
Muirden
Turrieff
Aberdeenshire
AB53 4NH





PHOTOMONTAGE

VIEW FLAT AT A COMFORTABLE ARM'S LENGTH

PROJECT: CREAG DHUBH WIND FARM
FIGURE: 7.48E
VIEWPOINT 22: A83 ARAY BRIDGE

DATE: 14/10/2020
TIME: 15.40
GRID REFERENCE: 209820 709053
ELEVATION: 7m AOD

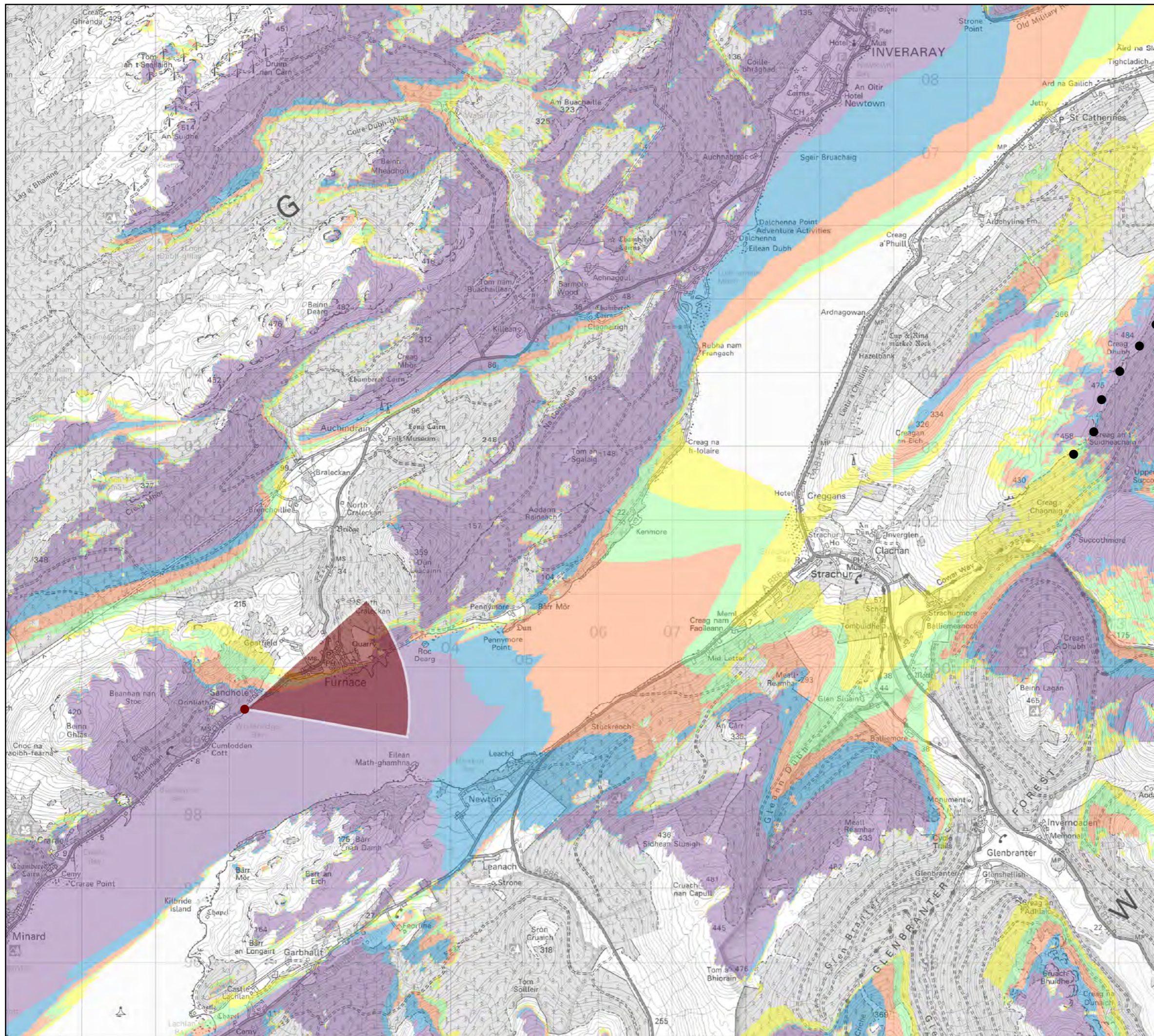
BEARING TO SITE CENTRE: 143°
DISTANCE TO NEAREST TURBINE: 5732m
CAMERA HEIGHT ABOVE GROUND: 1.5m

CAMERA: Canon EOS 5D
LENS: 50mm (Canon EF 50mm f/1.8)
HORIZONTAL FIELD OF VIEW: 53.5°

VERTICAL FIELD OF VIEW: 18.2°
PROJECTION: Planar
PRINCIPAL DISTANCE: 812.5mm

Muirden Energy LLP
Muirden
Turriff
Aberdeenshire
AB53 4NH





PROJECT: CREAG DHUBH

CLIENT: CREAG DHUBH RENEWABLES LLP

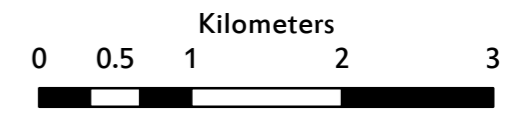
FIGURE 7.49

Viewpoint 23 - A83 (South of Furnace)

Located approximately 1km south of the village of Furnace along a short stretch of the A83 road where views are unhindered by roadside vegetation.

Scale: 1:50,000
 Drawn by: AE
 Checked by: AF
 Date: 15/12/2020

- Key:**
- Proposed wind turbine
 - Viewpoint
 - ▲ 53.5° field of view
 - 1 - 2 turbines theoretically visible
 - 3 - 4 turbines theoretically visible
 - 5 - 6 turbines theoretically visible
 - 7 - 8 turbines theoretically visible
 - 9 turbines theoretically visible



Crown copyright 2020. All rights reserved. Ordnance Survey licence number 100050155.



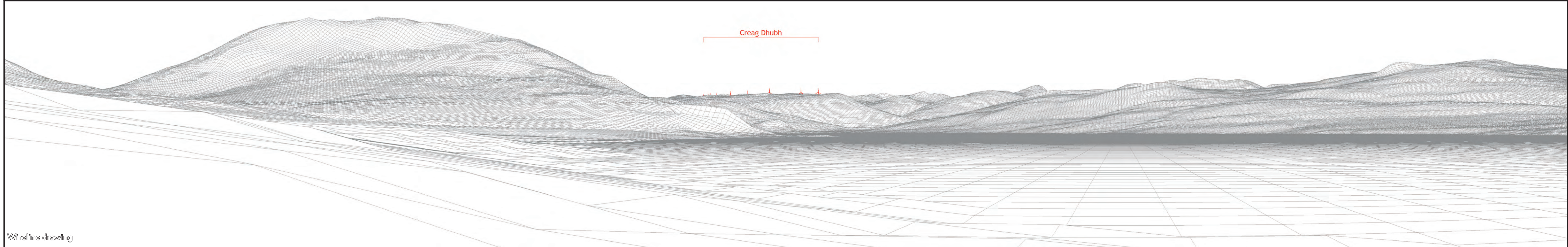
MUIRDEN ENERGY LLP
 Muirden
 Turriff
 Aberdeenshire
 AB53 4NH





Baseline photograph

This image provides landscape and visual context only



Wireline drawing

PROJECT: CREAG DHUBH WIND FARM
FIGURE: 7.49A
VIEWPOINT 23: A83 (SOUTH OF FURNACE)

DATE: 9/12/2020
TIME: 15.30
GRID REFERENCE: 201207 699435
ELEVATION: 7m AOD

BEARING TO SITE CENTRE: 71°
DISTANCE TO NEAREST TURBINE: 11760m
CAMERA HEIGHT ABOVE GROUND: 1.5m

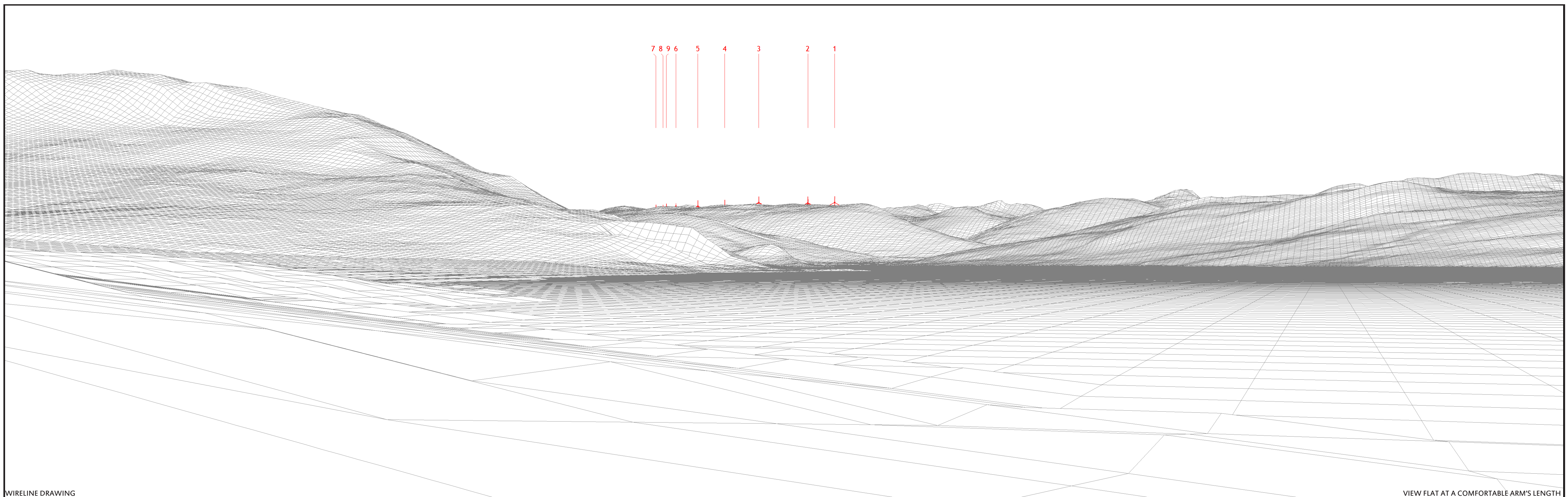
CAMERA: Canon EOS 5D
LENS: 50mm (Canon EF 50mm f/1.8)
HORIZONTAL FIELD OF VIEW: 90°

VERTICAL FIELD OF VIEW: 14.2°
PROJECTION: Cylindrical
PRINCIPAL DISTANCE: 522mm

CUMULATIVE PROJECTS KEY:
 Operational Consented
 Application Scoping

Muirden Energy LLP
 Muirden
 Turriff
 Aberdeenshire
 AB53 4NH





7 8 9 6 5 4 3 2 1

WIRELINE DRAWING
PROJECT: CREAG DHUBH WIND FARM
FIGURE: 7.49B
VIEWPOINT 23: A83 (SOUTH OF FURNACE)

DATE: 9/12/2020
TIME: 15.30
GRID REFERENCE: 201207 699435
ELEVATION: 7m AOD

BEARING TO SITE CENTRE: 71°
DISTANCE TO NEAREST TURBINE: 11760m
CAMERA HEIGHT ABOVE GROUND: 1.5m

CAMERA: Canon EOS 5D
LENS: 50mm (Canon EF 50mm f/1.8)
HORIZONTAL FIELD OF VIEW: 53.5°

VERTICAL FIELD OF VIEW: 18.2°
PROJECTION: Planar
PRINCIPAL DISTANCE: 812.5mm

VIEW FLAT AT A COMFORTABLE ARM'S LENGTH

Muirden Energy LLP
 Muirden
 Turriff
 Aberdeenshire
 AB53 4NH





PHOTOMONTAGE

VIEW FLAT AT A COMFORTABLE ARM'S LENGTH

PROJECT: CREAG DHUBH WIND FARM
FIGURE: 7.49C
VIEWPOINT 23: A83 (SOUTH OF FURNACE)

DATE: 9/12/2020
TIME: 15.30
GRID REFERENCE: 201207 699435
ELEVATION: 7m AOD

BEARING TO SITE CENTRE: 71°
DISTANCE TO NEAREST TURBINE: 11760m
CAMERA HEIGHT ABOVE GROUND: 1.5m

CAMERA: Canon EOS 5D
LENS: 50mm (Canon EF 50mm f/1.8)
HORIZONTAL FIELD OF VIEW: 53.5°

VERTICAL FIELD OF VIEW: 18.2°
PROJECTION: Planar
PRINCIPAL DISTANCE: 812.5mm

Muirden Energy LLP
Muirden
Turriff
Aberdeenshire
AB53 4NH

